

# KHSAA Basketball - Game Box Score

## South Laurel Cardinals vs. John Hardin Bulldogs

Date: 03/15/2006 Time: 2:00 pm Site: Rupp Arena-Lexington, KY Attendance: 14031

### Visitors: John Hardin Bulldogs

##	Name	P	FG	3 Pt	FT	PTS	ORB	DRB	TR	PF	AST	TO	BS	ST	MIN
5	Bryceton Adams		1/3	1/2	0/0	3	2	2	4	2	0	0	0	0	14:12
11	* Ricky Price		0/7	0/4	1/2	1	2	3	5	1	0	0	0	2	23:48
22	Tahj Haley		0/0	0/0	0/0	0	0	0	0	0	0	0	0	0	0:36
25	* Maze Stallworth		4/12	2/9	2/2	12	0	3	3	3	1	1	1	0	29:55
31	Derek Hensley		0/0	0/0	0/0	0	0	0	0	0	0	0	0	0	DNP
33	Germain Smith		0/2	0/0	0/0	0	0	0	0	1	1	3	0	0	10:20
40	* Jerren Morning		0/2	0/1	0/0	0	1	1	2	2	2	1	0	1	25:52
43	* Brandon Bland		5/11	0/1	3/3	13	0	6	6	4	0	2	0	0	29:41
44	* Greg LeSage		2/6	0/0	0/0	4	3	1	4	4	3	2	0	0	23:12
45	Ed Butler		0/1	0/0	0/0	0	0	0	0	0	0	0	0	0	0:36
51	Terrence Butler		0/0	0/0	0/0	0	1	0	1	0	0	0	0	0	0:36
54	William Savoy		0/0	0/0	0/0	0	0	0	0	0	0	0	0	0	0:36
42	Richard Jernigan		0/0	0/0	0/0	0	0	0	0	0	0	0	0	0	DNP
12	Ross Redmond		0/0	0/0	0/0	0	0	0	0	0	0	0	0	0	DNP
35	Landon Graves		0/0	0/0	0/0	0	0	0	0	0	0	0	0	0	0:36
	Team						2	0	2			1			
	<b>Totals</b>		<b>12/44</b>	<b>3/17</b>	<b>6/7</b>	<b>33</b>	<b>11</b>	<b>16</b>	<b>27</b>	<b>17</b>	<b>7</b>	<b>10</b>	<b>1</b>	<b>3</b>	<b>160</b>
	<b>Total FG</b>		1st Half	9/25	36.0%	2nd Half	3/19	15.8%	Game	12/44	27.3%				
	<b>3 PT FG</b>		1st Half	3/9	33.3%	2nd Half	0/8	0.00%	Game	3/17	17.6%				
	<b>Free Throws</b>		1st Half	0/0	0.00%	2nd Half	6/7	85.7%	Game	6/7	85.7%				

### Home: South Laurel Cardinals

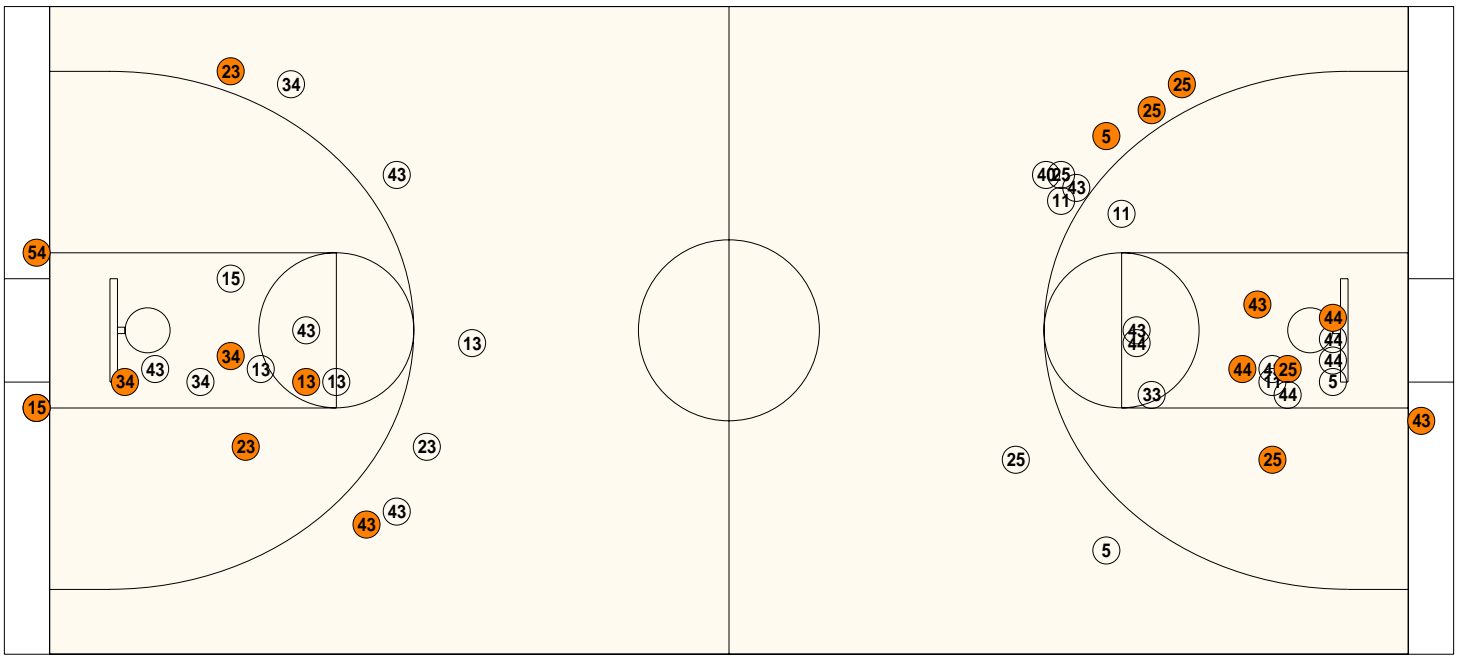
##	Name	P	FG	3 Pt	FT	PTS	ORB	DRB	TR	PF	AST	TO	BS	ST	MIN
11	Billy Jones		0/0	0/0	0/0	0	0	0	0	0	0	0	0	0	DNP
13	* Ty Proffitt		4/9	1/2	3/6	12	0	2	2	0	3	3	0	3	31:24
15	David Goodin		1/2	0/0	0/0	2	0	1	1	2	0	1	0	0	18:58
22	Zach Marcum		1/1	0/0	0/1	2	0	2	2	1	0	0	0	0	4:35
23	* Josh Riley		2/3	1/2	0/0	5	0	0	0	0	0	1	0	0	13:13
24	Mark Conley		0/0	0/0	0/0	0	0	0	0	0	0	0	0	0	0:36
25	Casey Hamm		0/0	0/0	0/0	0	0	0	0	0	0	0	0	0	0:36
32	George Cress		0/0	0/0	0/0	0	0	0	0	0	0	0	0	0	0:36
33	Phillip Hibbard		1/1	0/0	0/0	2	0	0	0	0	0	0	0	0	0:36
34	* Trey Smith		2/5	0/2	3/4	7	2	7	9	3	0	2	0	1	26:40
43	* Jordan Hammonds		2/7	2/5	0/2	6	0	5	5	0	2	0	0	1	31:24
44	Rusty Siler		0/0	0/0	0/0	0	0	0	0	0	1	0	0	0	0:36
54	* Walt Allen		4/6	0/0	3/5	11	1	1	2	1	1	4	2	1	30:46
12	Zach Johnson		0/0	0/0	0/0	0	0	0	0	0	0	0	0	0	DNP
51	Jordan Bortnem		0/0	0/0	0/0	0	0	0	0	0	0	0	0	0	DNP
	Team						1	1	2						
	<b>Totals</b>		<b>17/34</b>	<b>4/11</b>	<b>9/18</b>	<b>47</b>	<b>4</b>	<b>19</b>	<b>23</b>	<b>7</b>	<b>7</b>	<b>11</b>	<b>2</b>	<b>6</b>	<b>160</b>
	<b>Total FG</b>		1st Half	9/20	45.0%	2nd Half	8/14	57.1%	Game	17/34	50.0%				
	<b>3 PT FG</b>		1st Half	2/7	28.6%	2nd Half	2/4	50.0%	Game	4/11	36.4%				
	<b>Free Throws</b>		1st Half	3/4	75.0%	2nd Half	6/14	42.9%	Game	9/18	50.0%				

	JohnH	SLaur		JohnH	SLaur		JohnH	SLaur
Free Throw Pts	6	9	3Pt Points	9	12	Pts/Possession	0.70	0.98
Pts off Turnovers	16	9	2nd Chance Points	5	3	Pts off Bench	3	6
Total Rebounds	27	23	Team Rebounds	2	2	Dead Ball Reb	1	8
Off Rebound %	36.7	20.0	Def Rebound %	80.0	63.3	Total Rebound %	54.0	46.0
3Pt Efficiency	-4.6	-1.3	Def. Stops	27	29	Pts/Shot	0.70	1.09
Technical Fouls	JohnH	SLaur	None	None				
Officials	Scott Johnson, Barry Barnes, Richard Price							

	Qtr 1	Qtr 2	Qtr 3	Qtr 4	OT 1	OT 2	OT 3	OT 4	Total
John Hardin Bulldogs	10	11	9	3	0	0	0	0	33
South Laurel Cardinals	14	9	13	11	0	0	0	0	47

**Largest Lead** SLaur 47 JohnH 33 (14 pts) **Lead Changes** 5 **Number of Ties** 6  
**Comments:** None

**FIRST HALF**



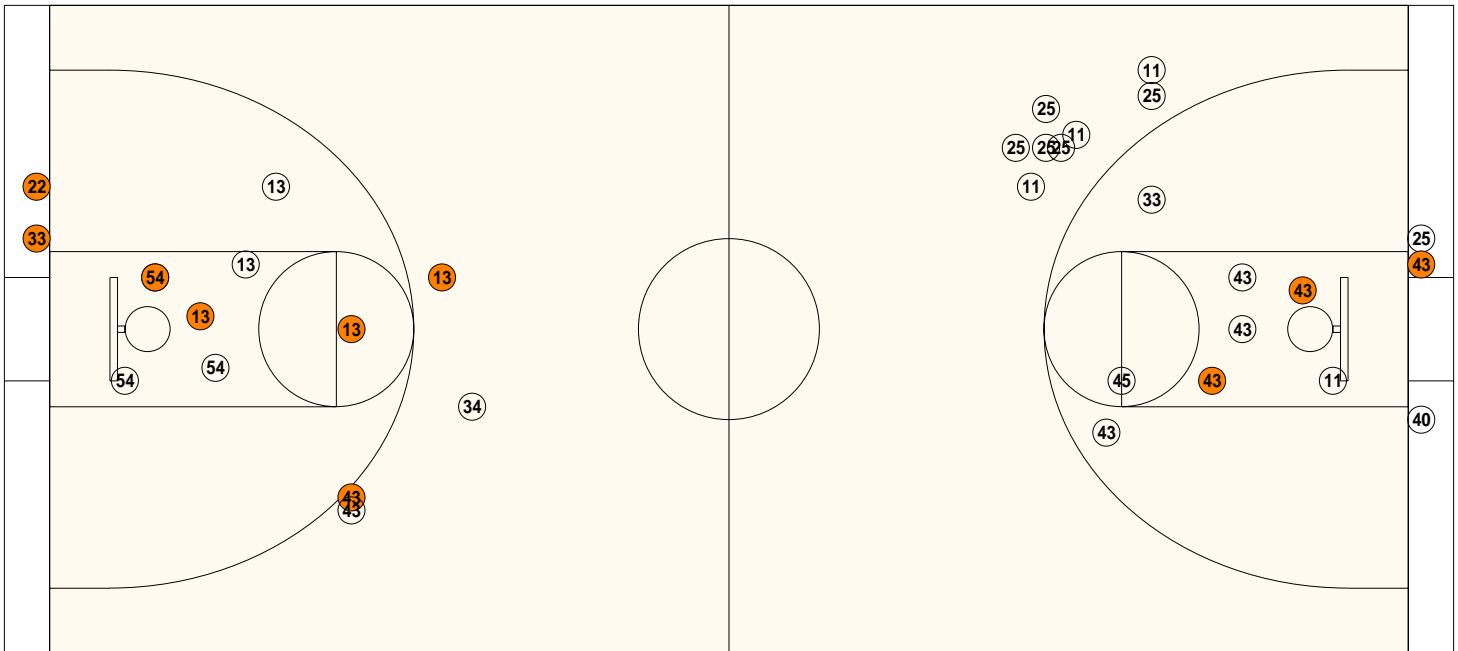
**South Laurel**

<b>Shooting</b>	<b>Pts</b>	<b>Pts</b>
2FG 7/13 (53.8%)	14	Pts/Shot 1.05
3FG 2/7 (28.6%)	6	2nd Eff Pts 2
TFG 9/20 (45.0%)		Pts off TO's 4
FT 3/4 (75.0%)	3	3Pt Eff -7.3
Scoring Distribution: 2FG 60.9% 3FG 26.1% FT 13.0%		

**John Hardin**

<b>Shooting</b>	<b>Pts</b>	<b>Pts</b>
2FG 6/16 (37.5%)	12	Pts/Shot 0.84
3FG 3/9 (33.3%)	9	2nd Eff Pts 2
TFG 9/25 (36.0%)		Pts off TO's 11
FT 0/0 (0.0%)	0	3Pt Eff +8.3
Scoring Distribution: 2FG 57.1% 3FG 42.9% FT 0.0%		

**SECOND HALF**

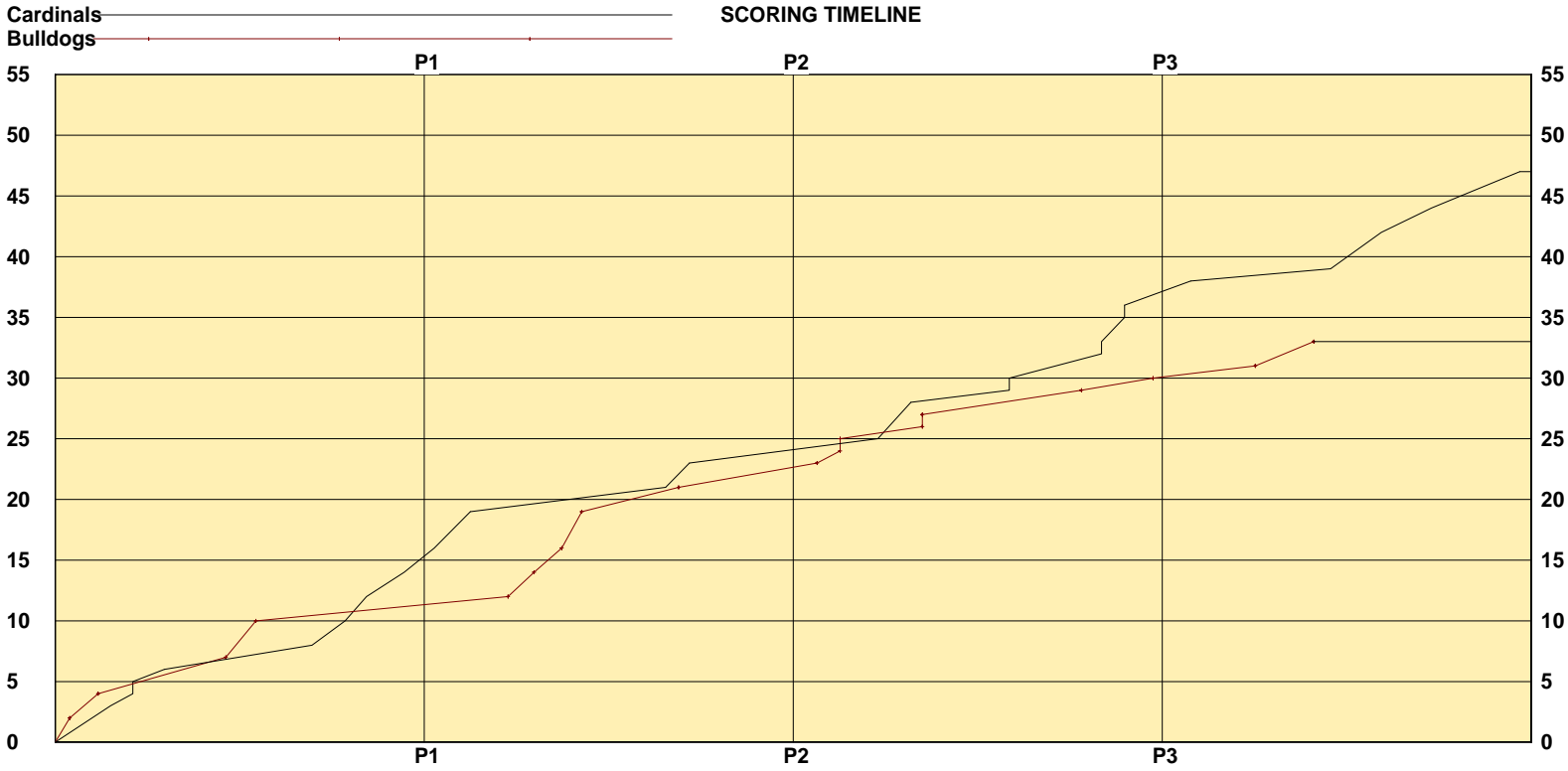
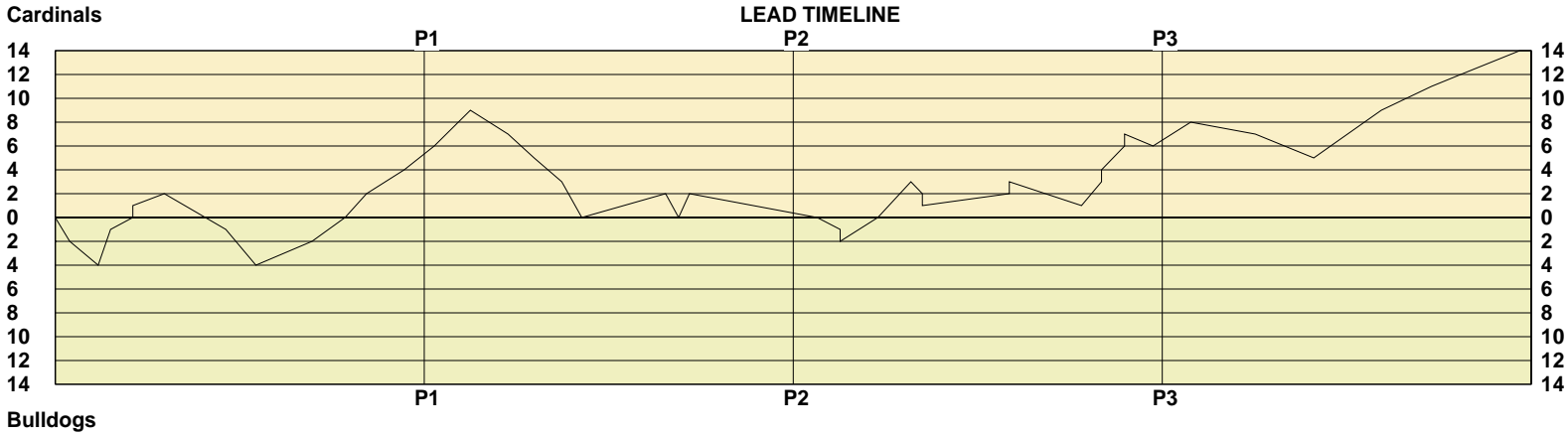


**South Laurel**

<b>2FG 6/10 (60.0%)</b>	<b>12s</b>	<b>Pts/Shot 1.14</b>
3FG 2/4 (50.0%)	6	2nd Eff Pts 1
TFG 8/14 (57.1%)		Pts off TO's 5
FT 6/14 (42.9%)	6	3Pt Eff +10.0
Scoring Distribution: 2FG 50.0% 3FG 25.0% FT 25.0%		

**John Hardin**

<b>2FG 3/11 (27.3%)</b>	<b>6ts</b>	<b>Pts/Shot 0.55</b>
3FG 0/8 (0.0%)	0	2nd Eff Pts 3
TFG 3/19 (15.8%)		Pts off TO's 5
FT 6/7 (85.7%)	6	3Pt Eff -18.2
Scoring Distribution: 2FG 50.0% 3FG 0.0% FT 50.0%		



Largest Lead SLaur 47 JohnH 33 (14 pts) Lead Changes 5 Number of Ties 6

KHSAA Basketball - Play by Play Report - Scoring Only (pg 1)

South Laurel Cardinals vs. John Hardin Bulldogs

Date: 03/15/2006 Time: 2:00 pm Site: Rupp Arena-Lexington, KY Attendance: 14031

Name	Action	Action	Score	Clock	Diff	Name	Action	Action
			0-2	1	7:41 -2 (L1)	B Bland	FG Made	G LeSage Assist
			0-4	1	7:04 -4	G LeSage	FG Made	
J Riley	3Pt Made	T Proffitt Assist	3-4	1	6:48 -1			
T Proffitt	FT Made		4-4	1	6:19 (T1)	G LeSage	Personal Foul	
T Proffitt	FT Made		5-4	1	6:19 +1 (L2)			
W Allen	FT Made		6-4	1	5:38 +2			
			6-7	1	4:18 -1 (L3)	B Adams	3Pt Made	M Stallworth Assist
			6-10	1	3:39 -4	M Stallworth	3Pt Made	G LeSage Assist
W Allen	Layup Made		8-10	1	2:26 -2			
T Smith	Putback Made		10-10	1	1:43 (T2)			
T Proffitt	FG Made		12-10	1	1:15 +2 (L4)			
W Allen	Layup Made	J Hammonds Assist	14-10	1	0:26 +4			

End of Period Summary Cardinals 14 Bulldogs 10

Largest Lead: Cardinals 0 Bulldogs 4 (4 pts)

Lead in Period: Cardinals 0 Bulldogs 4 (4 pts)

3 for 6 oppo pts

1 for 2 pts

5/9 for 55.6 %

3/4 for 75.0 %

Turnovers

2nd Chances

Field Goals

Free Throws

Lead Changes: 4 Ties: 2

Lead Changes: 3 Ties: 2 (this period)

5 for 4 oppo pts

2 for 0 pts

4/11 for 36.4 %

0/0 for 0.00 %

D Goodin	Layup Made	J Hammonds Assist	16-10	2	7:47 +6			
J Hammonds	3Pt Made	T Proffitt Assist	19-10	2	7:00 +9			
			19-12	2	6:11 +7	G LeSage	Putback Made	
			19-14	2	5:37 +5	B Bland	Layup Made	G LeSage Assist
			19-16	2	5:01 +3	M Stallworth	FG Made	
			19-19	2	4:35 (T3)	M Stallworth	3Pt Made	
T Smith	FG Made		21-19	2	2:46 +2			
			21-21	2	2:29 (T4)	M Stallworth	FG Made	J Morning Assist
J Riley	FG Made		23-21	2	2:15 +2			

End of Period Summary Cardinals 23 Bulldogs 21

Largest Lead: Cardinals 19 Bulldogs 10 (9 pts)

Lead in Period: Cardinals 19 Bulldogs 10 (9 pts)

2 for 5 oppo pts

1 for 0 pts

4/11 for 36.4 %

0/0 for 0.00 %

Turnovers

2nd Chances

Field Goals

Free Throws

Lead Changes: 4 Ties: 4

Lead Changes: 0 Ties: 2 (this period)

1 for 0 oppo pts

4 for 2 pts

5/14 for 35.7 %

0/0 for 0.00 %

			23-23	3	7:29 (T5)	B Bland	FG Made	J Morning Assist
			23-24	3	6:59 -1 (L5)	M Stallworth	FT Made	
			23-25	3	6:59 -2	M Stallworth	FT Made	
T Proffitt	FG Made		25-25	3	6:10 (T6)			
J Hammonds	3Pt Made	T Proffitt Assist	28-25	3	5:27 +3 (L6)			
			28-26	3	5:12 +2	B Bland	FT Made	
			28-27	3	5:12 +1	B Bland	FT Made	
T Smith	FT Made		29-27	3	3:19 +2	J Morning	Personal Foul	
T Smith	FT Made		30-27	3	3:19 +3			
			30-29	3	1:45 +1	B Bland	FG Made	G Smith Assist
T Proffitt	FG Made		32-29	3	1:19 +3			
T Proffitt	FT Made		33-29	3	1:19 +4			

KHSAA Basketball - Play by Play Report - Scoring Only (pg 2)

South Laurel Cardinals vs. John Hardin Bulldogs

Date: 03/15/2006 Time: 2:00 pm Site: Rupp Arena-Lexington, KY Attendance: 14031

Name	Action	Action	Score	Clock	Diff	Name	Action	Action
W Allen	FG Made		35-29	3 0:49	+6			
W Allen	FT Made		36-29	3 0:49	+7			
T Smith	Personal Foul		36-30	3 0:12	+6	B Bland	FT Made	

End of Period Summary Cardinals 36 Bulldogs 30

Largest Lead: Cardinals 19 Bulldogs 10 (9 pts)

Lead in Period: Cardinals 36 Bulldogs 29 (7 pts)

3 for 2 oppo pts

1 for 0 pts

4/8 for 50.0 %

4/7 for 57.1 %

Turnovers

2nd Chances

Field Goals

Free Throws

Lead Changes: 6 Ties: 6

Lead Changes: 1 Ties: 2 (this period)

2 for 3 oppo pts

2 for 2 pts

2/8 for 25.0 %

5/5 for 100 %

W Allen	FG Made		38-30	4 7:23	+8			
			38-31	4 5:59	+7	R Price	FT Made	
			38-33	4 4:43	+5	B Bland	Layup Made	
W Allen	FT Made		39-33	4 4:21	+6			
T Proffitt	3Pt Made	W Allen Assist	42-33	4 3:15	+9			
Z Marcum	Layup Made		44-33	4 2:10	+11			
T Smith	FT Made		45-33	4 1:32	+12			
P Hibbard	Layup Made	R Siler Assist	47-33	4 0:15	+14			

End of Period Summary Cardinals 47 Bulldogs 33

Largest Lead: Cardinals 47 Bulldogs 33 (14 pts)

Lead in Period: Cardinals 47 Bulldogs 33 (14 pts)

3 for 3 oppo pts

1 for 1 pts

4/6 for 66.7 %

2/7 for 28.6 %

Turnovers

2nd Chances

Field Goals

Free Throws

Lead Changes: 6 Ties: 6

Lead Changes: 0 Ties: 0 (this period)

2 for 2 oppo pts

3 for 1 pts

1/11 for 9.09 %

1/2 for 50.0 %

No.	John Hardin Bulldogs	Total FG		3-point		Free throw		Rebounds			F	TP	A	TO	BLK	STL	MIN
		FG	FGA	FG	FGA	FT	FTA	Off	Def	Tot							
5	Bryceton Adams	1	3	1	2	0	0	2	2	4	2	3	0	0	0	0	14:12
11	<b>Ricky Price</b>	0	7	0	4	1	2	2	3	5	1	1	0	0	0	2	23:48
22	Tahj Haley	0	0	0	0	0	0	0	0	0	0	0	0	0	0	0	0:36
25	<b>Maze Stallworth</b>	4	12	2	9	2	2	0	3	3	3	12	1	1	1	0	29:55
31	Derek Hensley	0	0	0	0	0	0	0	0	0	0	0	0	0	0	0	DNP
43	<b>Brandon Bland</b>	5	11	0	1	3	3	0	6	6	4	13	0	2	0	0	29:41
40	<b>Jerren Morning</b>	0	2	0	1	0	0	1	1	2	2	0	2	1	0	1	25:52
44	<b>Greg LeSage</b>	2	6	0	0	0	0	3	1	4	4	4	3	2	0	0	23:12
33	Germain Smith	0	2	0	0	0	0	0	0	0	1	0	1	3	0	0	10:20
45	Ed Butler	0	1	0	0	0	0	0	0	0	0	0	0	0	0	0	0:36
51	Terrence Butler	0	0	0	0	0	0	1	0	1	0	0	0	0	0	0	0:36
54	William Savoy	0	0	0	0	0	0	0	0	0	0	0	0	0	0	0	0:36
35	Landon Graves	0	0	0	0	0	0	0	0	0	0	0	0	0	0	0	0:36
42	Richard Jernigan	0	0	0	0	0	0	0	0	0	0	0	0	0	0	0	DNP
12	Ross Redmond	0	0	0	0	0	0	0	0	0	0	0	0	0	0	0	DNP
<b>Team (Included in Totals)</b>								<b>2</b>	<b>0</b>	<b>2</b>							
<b>Totals</b>		<b>12</b>	<b>44</b>	<b>3</b>	<b>17</b>	<b>6</b>	<b>7</b>	<b>11</b>	<b>16</b>	<b>27</b>	<b>17</b>	<b>33</b>	<b>7</b>	<b>10</b>	<b>1</b>	<b>3</b>	<b>160</b>
Total FG%:1st half 9 - 25 (36.0%) 2nd half 3 - 19 (15.8%) Game 12 - 44 (27.3%)												Deadball					
3Pt FG%: 1st half 3 - 9 (33.3%) 2nd half 0 - 8 (0.00%) Game 3 - 17 (17.6%)												rebounds					
FT%: 1st half 0 - 0 (0.00%) 2nd half 6 - 7 (85.7%) Game 6 - 7 (85.7%)												1					

No.	South Laurel Cardinals	Total FG		3-point		Free throw		Rebounds			F	TP	A	TO	BLK	STL	MIN
		FG	FGA	FG	FGA	FT	FTA	Off	Def	Tot							
11	Billy Jones	0	0	0	0	0	0	0	0	0	0	0	0	0	0	0	DNP
13	<b>Ty Proffitt</b>	4	9	1	2	3	6	0	2	2	0	12	3	3	0	3	31:24
15	David Goodin	1	2	0	0	0	0	0	1	1	2	2	0	1	0	0	18:58
22	Zach Marcum	1	1	0	0	0	1	0	2	2	1	2	0	0	0	0	4:35
23	<b>Josh Riley</b>	2	3	1	2	0	0	0	0	0	0	5	0	1	0	0	13:13
43	<b>Jordan Hammonds</b>	2	7	2	5	0	2	0	5	5	0	6	2	0	0	1	31:24
54	<b>Walt Allen</b>	4	6	0	0	3	5	1	1	2	1	11	1	4	2	1	30:46
34	<b>Trey Smith</b>	2	5	0	2	3	4	2	7	9	3	7	0	2	0	1	26:40
24	Mark Conley	0	0	0	0	0	0	0	0	0	0	0	0	0	0	0	0:36
25	Casey Hamm	0	0	0	0	0	0	0	0	0	0	0	0	0	0	0	0:36
32	George Cress	0	0	0	0	0	0	0	0	0	0	0	0	0	0	0	0:36
33	Phillip Hibbard	1	1	0	0	0	0	0	0	0	0	2	0	0	0	0	0:36
44	Rusty Siler	0	0	0	0	0	0	0	0	0	0	0	1	0	0	0	0:36
12	Zach Johnson	0	0	0	0	0	0	0	0	0	0	0	0	0	0	0	DNP
51	Jordan Bortnem	0	0	0	0	0	0	0	0	0	0	0	0	0	0	0	DNP
<b>Team (Included in Totals)</b>								<b>1</b>	<b>1</b>	<b>2</b>							
<b>Totals</b>		<b>17</b>	<b>34</b>	<b>4</b>	<b>11</b>	<b>9</b>	<b>18</b>	<b>4</b>	<b>19</b>	<b>23</b>	<b>7</b>	<b>47</b>	<b>7</b>	<b>11</b>	<b>2</b>	<b>6</b>	<b>160</b>
Total FG%:1st half 9 - 20 (45.0%) 2nd half 8 - 14 (57.1%) Game 17 - 34 (50.0%)												Deadball					
3Pt FG%: 1st half 2 - 7 (28.6%) 2nd half 2 - 4 (50.0%) Game 4 - 11 (36.4%)												rebounds					
FT%: 1st half 3 - 4 (75.0%) 2nd half 6 - 14 (42.9%) Game 9 - 18 (50.0%)												8					

Technical Fouls: None

Attendance: 14031

Officials: Scott Johnson, Barry Barnes, Richard Price

Score by Period						1st	2nd	3rd	4th	Final	Record	Overall	Conf
John Hardin Bulldogs						10	11	9	3	<b>33</b>	Bulldogs		
South Laurel Cardinals						14	9	13	11	<b>47</b>	Cardinals		

<b>Cardinals Bulldogs</b>		<b>Cardinals Bulldogs</b>		<b>Cardinals Bulldogs</b>	
Points off Turnovers	9 16	Second Effort Points	3 5	Bench Points	6 3
Points in the Paint	16 10	3 Point Points	12 9	Free Throw Points	9 6
3pt Efficiency	-1.3 -4.6	Points/Shot	1.09 0.70	Defensive Stops	29 27
Largest Lead	47 33 (14 pts)	Lead Changes	5	Number of Ties	6

Game comments: None